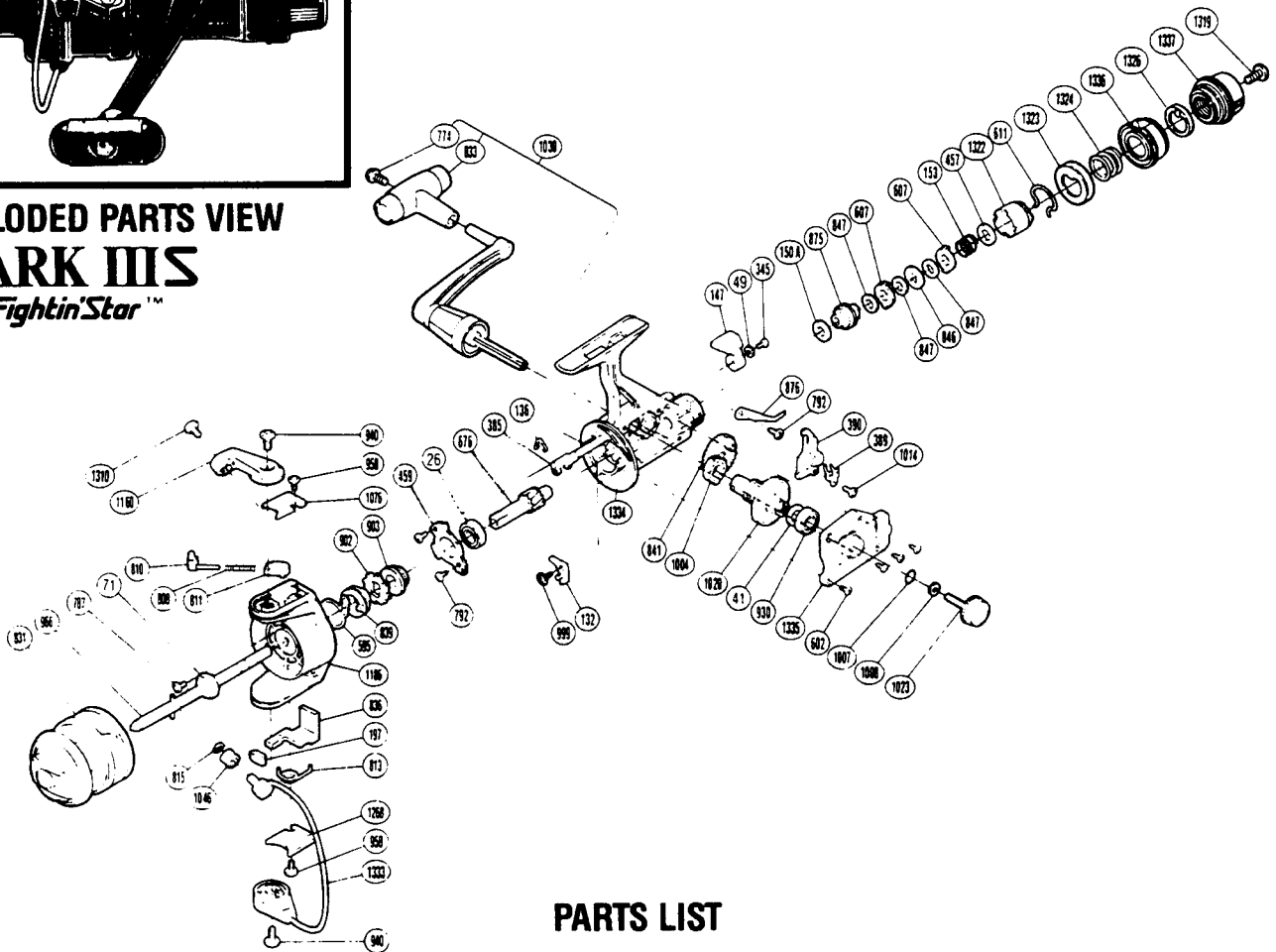


EXPLODED PARTS VIEW
MARK III
with *Fightin' Star*™



SHIMANO

1988 REPAIR MANUAL

Shimano American Corporation, One Shimano
Irvine, CA 92

PARTS LIST

PART #	DESCRIPTION	PART #	DESCRIPTION	PART #	DESCRIPTION
RD 0026	Ball Bearing	RD 0792	Bearing Retainer Screw	RD 1007	Lock Washer Retainer
RD 0041	Drive Gear Washer	RD 0808	Bail Spring	RD 1008	Handle Lock Washer
RD 0049	Lock Washer	RD 0810	Bail Spring Guide A	RD 1014	Slider Retainer Screw
RD 0071	Rotor Nut	RD 0811	Bail Spring Guide B	RD 1020	Drive Gear
RD 0132	Anti-Reverse Pawl Assembly	RD 0813	Lever Spring	RD 1023	Handle Screw Cap
RD 0136	Anti-Reverse Cam Spring	RD 0815	Line Roller Washer	RD 1030	Handle Assembly
RD 0147	Anti-Reverse Lever	RD 0831	Spool Assembly (Universal)	RD 1046	Sic Ceramic Roller
RD 0150A	Drag Washer "C2" (White)	RD 0833	Handle Knob	RD 1076	Bail Spring Cover
RD 0153	Drag (Coil) Spring	RD 0836	Bail Trip Lever	RD 1160	Bail Arm
RD 0197	Bail Trip Slide Cam	RD 0839	Anti-Reverse Spring Holder	RD 1186	Rotor
RD 0345	Anti-Reverse Lever Screw	RD 0841	Oscillating Gear	RD 1268	Bail Trip Cover
RD 0385	Anti-Reverse Cam	RD 0846	Key Washer "A"	RD 1310	Line Roller Screw
RD 0389	Oscillating Slider Retainer	RD 0847	Drag Washer "H1"	RD 1319	Drag Knob Screw
RD 0390	Oscillating Slider	RD 0875	Drag Shaft	RD 1322	Pressure Screw
RD 0457	Drag Spring Washer "A"	RD 0876	Drag Click	RD 1323	Pre-Set Spring Cover
RD 0459	Bearing Retainer	RD 0902	Anti-Reverse Ratchet	RD 1324	Pre-Set Spring
RD 0595	Anti-Reverse Pawl Spring	RD 0903	Pinion Spacer	RD 1326	Pre-Set Cam
RD 0602	Side Cover Screw A	RD 0930	Ball Bearing	RD 1333	Bail Assembly
RD 0607	Eared Washer "B"	RD 0940	Bail Trip Cam Screw	RD 1334	Body
RD 0611	Hold Click Spring	RD 0958	Bail Trip Cover Screw	RD 1335	Side Cover
RD 0676	Pinion Gear	RD 0966	Main Shaft	RD 1336	Pre-Set Ring
RD 0774	Handle Knob Screw	RD 0999	Anti-Reverse Pawl Screw	RD 1337	Drag Knob
RD 0787	Nut Lock Screw	RD 1004	Bushing A		